

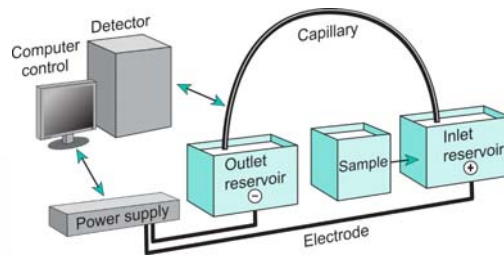
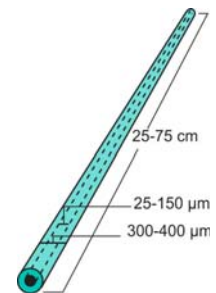
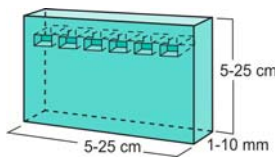


Capillary electrophoresis

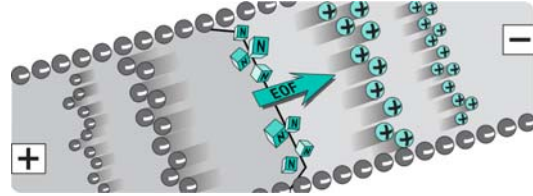
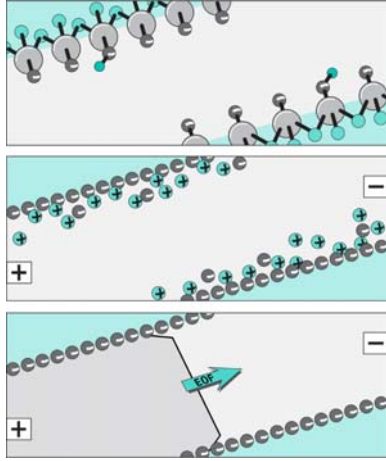


Peter Podbevšek

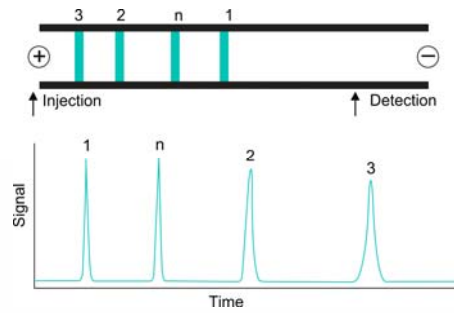
Never pour another gel again



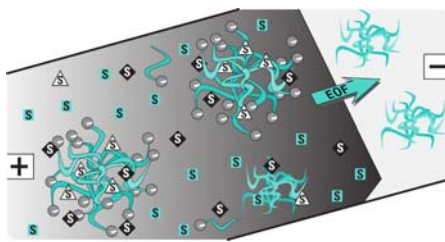
Electroosmotic flow (EOF)



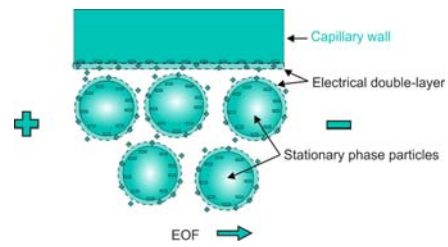
Capillary Zone Electrophoresis (CZE)



Modes of operation



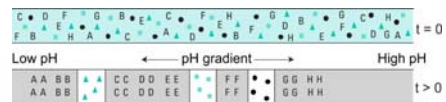
Micellar Elektrokinetic Chromatography (MEKC)



Capillary Electrochromatography (CEC)



Capillary Gel Electrophoresis (CGE)



Capillary Isoelectric Focusing (CIEF)



Some random specs

- Power supply
 - Max. voltage 30 kV
 - Max. current 300 μ A
 - Max. power 6 W
- Baseline noise <50 μ AU
- Linear dynamic range: 1×10^4
- High pressure system 2–12 bar
- Real time UV-Visible diode-array detector (190–600 nm)



Laser Induced Fluorescence (LIF)

- Argon laser – 488 nm
 - FITC (Fluorescein isothiocyanate)
 - FQ (3-(2-furoyl)quinoline-2-carboxaldehyde)
 - APTS (8-Aminopyrene-1,3,6-trisulfonic acid trisodium salt)
 - FAM (fluorescein amidite)
 - Yoyo-1 iodide, SYBR Green
 - Cy2



